

KING & COUNTRY'S



1914

AUTHENTIC HAND - MADE HISTORY...

KING & COUNTRY'S 1914

ON 28 JUNE 1914 the heir to the Austro-Hungarian throne, Archduke Franz Ferdinand and his wife were fatally shot in Sarajevo, Bosnia.

Within days this tiny "spark" would ignite a mighty fire that would engulf most of Europe and the world beyond.

Over four long, terrible years great empires would fall... all powerful rulers humbled and deposed... and



millions upon millions of soldiers and civilians killed. The Great War had begun.

King & Country's newest series focuses on the early stages of the conflict... The German invasion of Belgium and France.

Here, Kaiser Wilhelm II's grey clad infantry in their distinctive cloth covered pickelhaubs make their way towards the front.

Proud and confident these troops (and their commanders) hope for a quick, crushing blow against their French and British opponents before turning against the slow-moving Russian bear.

ABOUT OUR SOLDIERS

All of these first early-war German releases are sold individually except for The

Kaiser's Staff Car which includes two figures.

Among the pieces are some special "Personality Figures" including Kaiser Wilhelm II... General Hindenburg... Crown Prince "Willi" and an obscure Austrian volunteer in a Bavarian rifle regiment... Adolf Hitler.

At the outbreak of war the regular German Army was

almost a million men strong. On mobilizing its huge reserves this rapidly grew to a staggering 4 1/2 million soldiers.

Now is the time to begin "mobilizing" your First World War collection... today!

KING & COUNTRY

AUTHENTIC HAND-MADE HISTORY

Available around the world wherever fine quality military miniatures are sold.

KING & COUNTRY HEADQUARTERS

Suite 2301, 23rd Floor, No 3 Lockhart Road,
Wanchai, Hong Kong
Tel: (852) 2861 3450 Fax: (852) 2861 3806
E-mail: sales@kingandcountry.com

KING & COUNTRY SHOP

362, Pacific Place, 88 Queensway,
Hong Kong
Tel: (852) 2525 8603
Website: www.kingandcountry.com

KING & COUNTRY'S

1914

FW001



Kaiser Wilhelm II

FW002



Aide-de-Camp

FW003



Crown Prince "Willi"

FW004



Hindenburg

FW006



Marching Officer

FW005



Mounted Officer



FW007 Officer w/ Flag

FW008



Marching Bugler

FW009



Marching Rifleman

FW010



Standing Rifleman



FW011 Standing Officer

FW012



Private Hitler

FW013



The Kaiser's Staff Car Set

THE GERMANS Marching to Paris

FW034



German Armoured Car Set



FW014



Standing Firing

FW015



Kneeling Firing

FW017

Running w/
Rifle & Bugle

FW016

Charging w/
Rifle & Bayonet

FW018



Officer w/ Pistol

FW019



German Machine Gun Set

*All of our German infantry in action
are from the 13th Bavarian Rifle
Regiment... the
same unit
as our first
releases.*

FW020



Shot German

FW021
Dead
German

FW022



Standing Loading

FW023



Kneeling Loading



FW024

On 19 AUGUST 1914 the German Kaiser Wilhelm II ordered the commander of his army in the West, General von Kluck, to "obliterate the British and their contemptible little army". When word of this was published the British Expeditionary Force... far from being insulted adopted the slur and began to call themselves... "The Old Contemptibles".

Thus are legends born and over the next days, weeks and months the men of the BEF proved themselves to be fine soldiers and a painful thorn in the enemy's sides wherever they were encountered.

EARLY BATTLES

Among the regular forces which made up the bulk of the BEF were men from one of Scotland's oldest and proudest regiments - The King's Own Scottish Borderers, better known as the "KOSBies". Most of these soldiers were recruited from the lowlands and border country of Scotland. The majority of them came from agricultural and working class backgrounds and had enlisted for a better life, adventure and three square meals a day! These men were used to a hard life and hard campaigning... in France that August they got plenty of both!

Facing the mighty

FW028



FW026



onslaught of von Kluck's armies the "KOSBies" and their BEF comrades fought an almost continuous series of fighting withdrawals and rearguard actions through Belgium and northern France.

With their Short Magazine Lee Enfield rifles and expert marksmanship they took a heavy toll of the advancing Germans. In addition many of the officers and men had also fought in the Boer War and had first hand knowledge of fieldcraft and fire and movement in real battle situations. So, although outnumbered on many occasions they were able to inflict serious casualties on the enemy before rapidly disengaging and moving to new positions.



FW025



K&C's "KOSBies"

Our first Allied figures of "The Great War" series shows the "KOSBies" in action and firing on the advancing Germans... with one exception - Sir John French, Commander of the British Expeditionary Force.

FW024 shows the unflappable French calmly observing the enemy through his field glasses. Although personally brave and well liked by the troops Sir John was essentially a traditional 19th Century officer dealing with a very modern 20th Century war.

Standing nearby is FW025 a "KOSBie" Staff Officer studying a map of the situation. Adding to the ranks are a range of individual soldiers in a variety of fighting positions laying down accurate rifle fire on the attacking "Huns".

FW029



FW030



FW032

FW031



A BRIEF REGIMENTAL HISTORY

Founded in 1859 this Regiment has had a chequered but glorious past. It has fought for the Crown all over the globe... from the lowlands of Europe to the burning sands of Egypt and the steamy jungles of South East Asia. It has served on the treacherous North West Frontier, the beaches of Normandy and the hills of Korea. More recently its soldiers have fought in Northern Ireland...



Malaya, Aden and a dozen other hotspots. It has also played an important role in the Gulf War of 1991 and the present conflicts in Iraq and Afghanistan. Since 2006 it has been amalgamated into the new, much larger Royal Regiment of Scotland.

FW033



Two 2-man sets complete this first release... FW031, a medic tends a seriously wounded soldier while FW033 The Vickers Machine Gun Set spreads death and destruction across the battlefield.

These new figures are just the "opening volley" of "The Great War" series which promises to be just as expansive and exciting as K&C's many World War Two series. Look out for more in the coming months!

KING & COUNTRY

AUTHENTIC HAND-MADE HISTORY

Available around the world wherever fine quality military miniatures are sold.

KING & COUNTRY HEADQUARTERS

Suite 2301, 23rd Floor, No.3 Lockhart Road,
Wanchai, Hong Kong
Tel: (852) 2861 3450 Fax: (852) 2861 3806
E-mail: sales@kingandcountry.com

KING & COUNTRY SHOP

362, Pacific Place, 88 Queensway,
Hong Kong
Tel: (852) 2525 6003
Website: www.kingandcountry.com

KING & COUNTRY'S

FW035
Uhlán Officer



Uhlans!

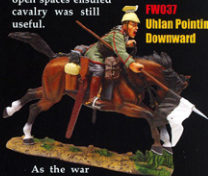
Uhlán: German, originally from the Polish *ulan*, from the Turkish *oglan*: Originally Polish light cavalry armed with lances; later incorporated into Prussian and Austrian military service as *Uhlans*. Similar troops in other European armies were known simply as "lancers".

In 1914, the Imperial German Army boasted no less than twenty-six regiments of *Uhlans*. Because German Hussar, Dragoon and Cuirassier units also carried lances there was a tendency among their British and French opponents to describe all German cavalry as "*Uhlans*".



FW036
Uhlán Bugler

After seeing plenty of mounted action during the opening months of the War most Uhlán regiments were dismounted to serve as "cavalry rifles" on the Western Front or transferred to the East where the wide open spaces ensured cavalry was still useful.



FW037
Uhlán Pointing Downward

As the war progressed some Uhlán units were among the first to lose their horses and be remounted on the new-fangled and revolutionary armoured cars.

THE K&C COLLECTION

Our latest WWI release features five individual mounted *Uhlans* doing what they did best... charging the enemy.

Wearing the traditional square topped Polish style "Czapka" headgear, double-breasted jacket and carrying the long lance with a black and white pennant these are impressive looking warriors. Their days, however are numbered... The horse is about to give way to the internal combustion engine.

FW038
Uhlán Attacking



And here it is - armoured plated and spitting bullets from its Maxim'08 machine gun. The K&C model is just one of many designs used by the forces of both sides during the conflict. Our vehicle comes complete with a standing commander.

FW039
Uhlán Pointing Forward



KING & COUNTRY

AUTHENTIC HAND-MADE HISTORY

Available around the world wherever fine quality military miniatures are sold.

KING & COUNTRY HEADQUARTERS
Suite 2301, 23rd Floor, No.3 Lockhart Road,
Wanchai, Hong Kong
Tel: (852) 2861 3450 Fax: (852) 2861 3806
E-mail: sales@kingandcountry.com

KING & COUNTRY SHOP
362, Pacific Place, 88 Queensway,
Hong Kong
Tel: (852) 2525 8603
Website: www.kingandcountry.com



FW034
German Armoured Car Set



KING & COUNTRY HEADQUARTERS

Suite 2301, 23rd Floor, No.3 Lockhart Road,
Wanchai, Hong Kong
Tel : (852) 2861 3450 Fax : (852) 2861 3806
E-mail: sales@kingandcountry.com

KING & COUNTRY SHOP

362, Pacific Place, 88 Queensway,
Hong Kong
Tel : (852) 2525 8603
Website : www.kingandcountry.com

KING & COUNTRY'S

1917



FW040
Advancing
Officer

FW043
"Attack!"



AT 6:30 AM, the roar of the tanks could be heard as they moved forward towards the German positions.

In the British frontlines it was also "Zero Hour". Officers raised whistles to their lips and blew three long blasts and began to climb up and out of the trenches. Behind them their infantrymen followed... the "big push" had begun.

As the British troops organized themselves and advanced they soon met up with the leading tanks. Moving forward together they naturally "bunched-up" in groups behind

FW041



FW043



seeking as much shelter and protection as possible. Apart from some scattered small arms fire the German response was strangely muted... no withering machine gun fire or deafening artillery blasts met the advancing "Tommys".

FW042



Soon, however this brief respite would end...

FW047



POOR, BLOODY INFANTRY

KING & COUNTRY's latest First World War release moves from 1914 up to 1917 with an impressive collection of steel-helmeted British "Tommy's" and a superb Mk IV Heavy Tank.

Brought together as 8 individual figures (plus one small 3-man set) these pieces make an impressive addition to any "Great War"

FW045

Dead Casualty



display or diorama adding drama and authentic realism in typical K&C style.

All of our infantrymen are from the 2/5th Bn. The Gloucestershire Regiment of the 61st. Division... Our Mk IV is in the markings of "Cavalier" one of "C" squadron's fighting vehicles in the newly-formed Royal Tank Regiment.

FW048

Lewis Gunner



Soon, they will come up against K&C's newest German "Soldaten"... Look out for them!

KING & COUNTRY

AUTHENTIC HAND-MADE HISTORY

Available around the world wherever fine quality military miniatures are sold.

FW046

Wounded



FW049

British Mark IV
Heavy Tank

MUD, BLOOD AND BARBED WIRE...

THE BATTLE OF CAMBRAI, which began on the 20th of November 1917, was originally envisaged as a large-scale tank raid...

Prior to this tanks had been used before on the Western Front but with a few, rare exceptions, the results had been disappointing. This was not surprising because of the poor ground chosen and the inclement weather. This time however the commander of the newly-formed Tank Corps believed the terrain around Cambrai was excellent and provided the perfect battlefield to show what his "armoured monsters" could really do!

A DIFFERENT KIND OF BATTLE

The plan was relatively simple... use the tanks (in great numbers) to punch a hole through the vaunted Hindenburg Line (the main defensive network of connected strong points built by the Germans across north eastern France in 1916/17) and capture the French town of Cambrai itself.

There were two novel features attached to this assault... First, the attack would commence without the usual preliminary artillery bombardment.

This would achieve the important element of surprise.

Second, was the actual deployment of the tanks themselves... In previous battles tanks were thinly spread out in support of the infantry formations. On this occasion the roles were reversed... the tanks would be concentrated together to give them the maximum shock value while assaulting the enemy. The following Infantry would be in support to mop up the shocked and stunned enemy survivors... if there were any!

On this cold, winter morning a total of 378 fighting tanks were to be deployed. These in turn would be backed-up with another 98 vehicles transporting additional supplies and ammunition.

Field Marshal Douglas Haig, Commander of the British Expeditionary Force provided some 19 infantry divisions for this battle along with

several large cavalry brigades to help exploit any breakthrough.

ZERO HOUR

At 0620 on the 20th of November, 1917 the leading tank units rumbled forward... just as dawn was breaking... followed by the infantry.

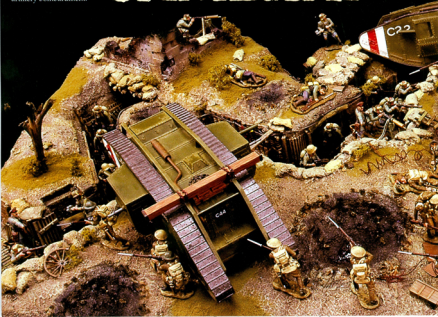
The Germans were caught by complete surprise. As the first tracked giants appeared there was panic and chaos in most of the enemy's front-line trenches. The tanks easily crushed the barbed wire obstacles and dropped their fascines (huge bundles of wood) into the trenches allowing them to cross over the deep defence works and move onto the second and third trench lines in the German rear.

The accompanying infantry leapt into the German lines killed or wounded any fighting opposition and took hundreds of prisoners. After consolidating their capture they also continued the advance.

Now the cavalry came up... moved through the gaps and began to exploit the open countryside behind

THE FIRST GREAT TANK ASSAULT

CAMBRAI



the Hindenburg line. As word of the success of the initial assaults reached back to headquarters the generals began to believe they might actually achieve their long-hoped-for breakthrough...

TANKS IN BATTLE

The use of tanks on the battlefield during the First World War was extremely limited... Mechanical failure was an all-too frequent reality and, before too long, the Germans also learned how to use light and medium artillery against them.

Just three days after the beginning of the battle of Cambrai only 92 British tanks remained as "runners". Unable to bring up more armoured reserves the British advance began to slow down and soon came to a grinding halt.

The Germans meanwhile launched

a series of counter-attacks to try to regain the ground they had earlier lost.

All too soon the fighting became bogged-down in the all too familiar pattern of trench warfare. The British however doggedly held on despite repeated assaults by storm troopers... hurricane like artillery bombardments

and mortaring and even low-flying, ground-straffing aircraft.

Eventually, Haig, the British commander pulled out of most of the hard-won gains... He and his army could not afford another long, drawn-out battle of attrition similar to those on the Somme in 1916 and Passchendaele earlier in 1917.

THE COST OF WAR

The Battle of Cambrai cost both the German and British armies approximately 45,000 men each. An awful "butcher's bill" for a few square miles of northern France. What made this particular struggle historic though was its first large scale use of a combined arms

assault bringing together armour, infantry and cavalry. For those with eyes to see this was very significant... it proved that the tactical advantage on the battlefield which for most of the war had rested with the defender, now lay with the attacker.

The long bloody years of trench warfare were about to end for good...



This First World War battlefield measures 22" x 44" and was designed and built by King & Country Workshop.

1917

FW050



FW056



ON THE MORNING of November 20, 1917

as British tanks rumbled towards the German front line trenches near Cambrai in northern France, a new kind of mobile warfare was launched...

FW051



After three long, bloody years of trench warfare, the British Army had, finally found a way to "crack-open" the Western Front.

Success came quickly and the German lines were broken in many places. Victory seemed assured.

FW057
Artillery
Set (1917)



However, all too soon, the attack "bogged-down"... the impetus was lost and, within 10 days of the initial assault beginning the Germans began to counter-attack!

KING & COUNTRY HEADQUARTERS
Suite 2301, 23rd Floor, No.3 Lockhart Road,
Wanchai, Hong Kong
Tel: (852) 2861 3450 Fax: (852) 2861 3806
E-mail: sales@kingandcountry.com



STOSSTRUPPEN TO THE RESCUE

KING & COUNTRY's newest release of First World War German "Soldaten" portrays a group of "Stosstruppen" or "Stormtroops" in action... Fighting in

KING & COUNTRY SHOP
362, Pacific Place, 88 Queensway,
Hong Kong
Tel: (852) 2525 8603
Website: www.kingandcountry.com

FW052



small, self-contained battle groups these men were well-supplied with mortars, machine guns, hand-grenades and other small-arms weapons.

Providing heavier backup was the light field artillery which worked closely in support of these "Stosstruppen".

Nine different soldiers are available as well as the 7.7mm field gun alongwith its 3-man crew of gunners.

MILITARY DIFFERENCES

Between the outbreak of war in 1914 and 1917 German military dress changed dramatically.

The most obvious was the appearance of the 1916 "Coatskirtle" steel-helmet famous as the symbol of the German soldier the world over... Many of the infantry pointed a simple camouflage pattern on their "Stalhelm". They also exchanged their jackboots for wrap-around leggings (copied from the British)... and their uniforms also became much more simplified.

Form your own "Stosstruppen" today!

FW054



FW055

